

## Where to Take Great Photos?

- ☐ Wat Bowonniwet
- ☐ Chakkapong Mosque Community
- ☐ Duriya Praneet Foundation
- ☐ Chao Pho Nu Shrine
- ☐ Wat Tri Thotsathep Worawihan

## Recommended Routes

## Wat Bowonniwet

650 metres 7 minutes

## Chakkapong Mosque Community

650 metres 6 minutes

## Som Song Pochana

110 metres 1 minutes

## Duriya Praneet Foundation

600 metres 6 minutes

## Wat sam Phraya Worawihan (Wat Bang Khun Phrom)

190 metres 2 minutes

## Wat Iam Woranuch

300 metres 4 minutes

## Wat Mai Amatarod

600 metres 6 minutes

## Chao Pho Nu Shrine

650 metres 8 minutes

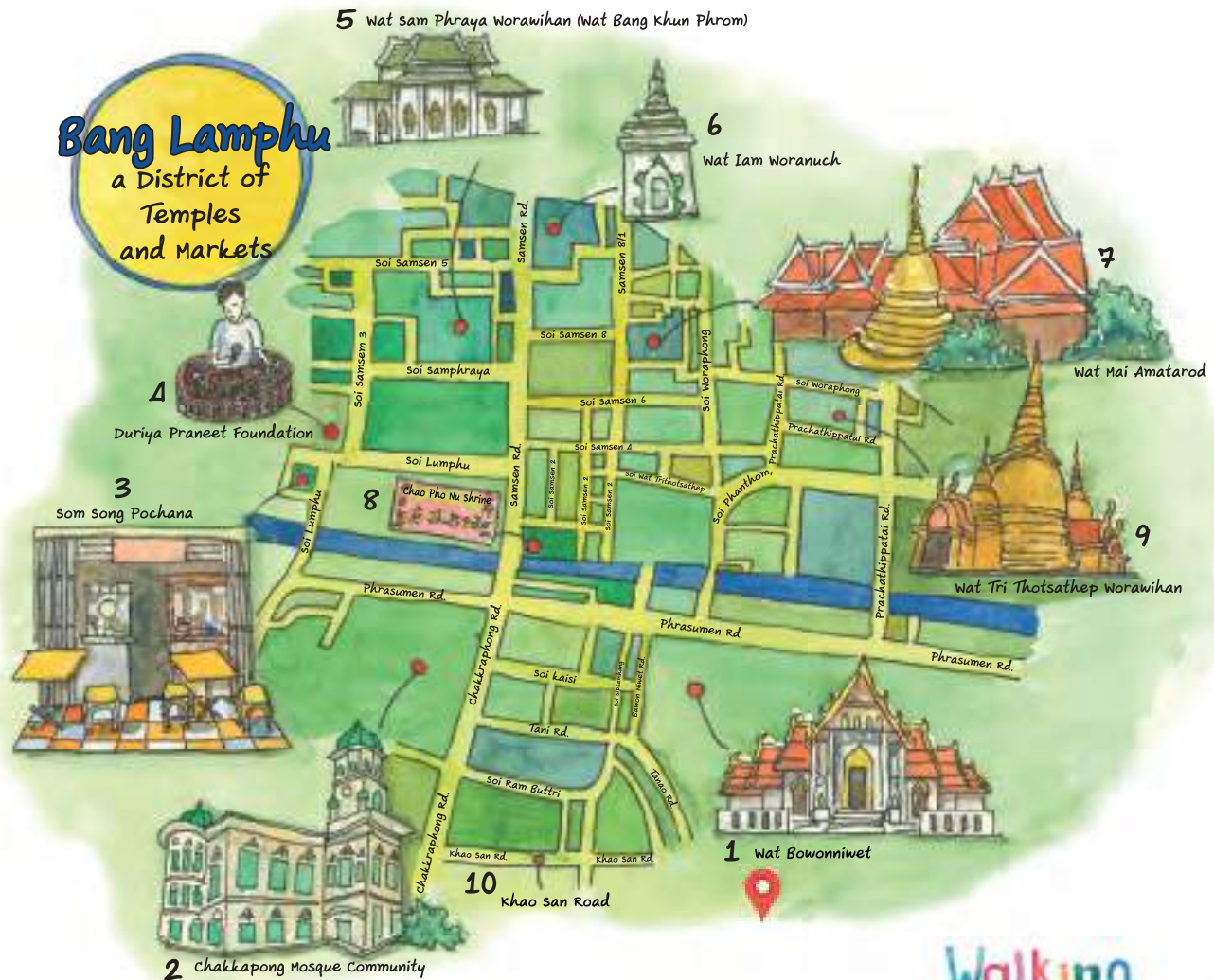
## Wat Tri Thotsathep Worawihan

1 kilometres 12 minutes

## Khao San Road

## Bang Lamphu

a District of  
Temples  
and Markets



Walking  
Bangkok

#walkingbangkok  
#walkingbkk

# \*Bang Lamphu

a District of  
Temples and Markets



## Wat Bowonniwet

01

Originally, this new temple was nearby Wat Rangsi Sutthawat. Later, they became one temple in which in the reign of King Rama III, the Ministry of the Palace rebuilt it. This temple was maintained and constructed various

items to become a temple of importance, especially during the reign of King Rama III. Later, it became the temple of the monarchs when they ordained as monks; e.g., King Rama V the Great and King Rama IX. This made the temple receive continuous maintenance. Presently, many ancient works of art and other items are still in good condition and can be seen and studied here.



02

## Chakkapong Mosque Community

This community that was also known in the past as "Suhra Wat Tong Pu" was established by some Muslims, who migrated from Pattani during the reign of King Rama II. The people have the skill as goldsmiths that has been passed down to every household. The community of Trok Masjid Chakkapong has a long Muslim culture that has existed in harmony. It is a hub for conducting religious activities of the community that lives in the area of the Chakkapong Mosque.





### Som Song Pochana

03

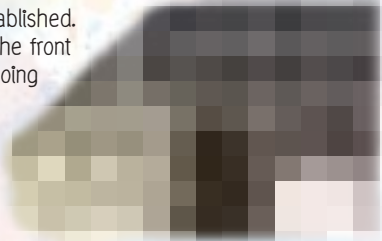


Moved from opposite Wat Sangwet Witsayaram after it had been opened for more than 40 years. Today, it has moved to the Samsen area between Samsen Sois 3 – 5. The delicious menu has also been brought to the new shop. No matter if it is Sukhothai noodles, Khao Phat Nam Phrik Long Ruea, or Kaeng Phet Pet Yang, the full-flavoured taste is sweet-smelling. Besides this, there are also ancient Thai desserts that are delectably sweet as well as a menu with dishes that are hard to find like Khanom Chin Sao Na; all provided with great service.

04

### Duriya Praneet Foundation

Is located near Wat Sangwet Witsayaram. Originally, in the front of the house was an old canal before Bangkok was established. Later, the canal was reclaimed to make a road. Initially the front entrance of Wat Sangwet Witsayaram faced the canal going to the Chao Phraya River, but when the city canal was excavated, this made the original old canal become shallow because it was not used. Today, Ban Duriya Praneet is still standing in its original location like it has for more than 100 years, and continues to pass on and convey the art of Thai music for youth and interested people with the resolve of its predecessors.



05

### Wat Sam Phraya Worawihan (Wat Bang Khun Phrom)

This temple was constructed during the reign of King Rama I the Great. The interior of the temple has some important items; e.g., the ordination hall that has beautiful Chinese-style architecture. It is made of brick and mortar with a 2-level low roof, and both the interior and exterior have attractive decorations. The Buddha image, "Luangpho Nang", is holding an alms bowl with both hands. The local people call the image "Phra Nang Um Bat" (the Buddha image holding the alms bowl), and anyone coming to pay respect believe that they will have prosperity and be wealthy. The Buddha image "Luangpho Non" is enshrined in the beautiful chapel, and anyone coming to pay respect believe that they will have a peaceful life.



06

**Wat Iam Woranuch**

This temple had already been constructed for a long time before 1899. There is only one arched doorway that is located on Samsen Road and is the entrance.

Inside there is a Buddha image and 11 sacred objects like the ordination hall in which in the front part is enshrined "Luangpho Phrabang Sitthichok". Another Buddha image of importance is "Luangpho San Phat Chang". Besides this, there are sacred items enshrined

around this temple that the people can pay homage daily including Brahma, the supreme God of Brahmanism and Hinduism; Ganesha, the God of knowledge, and Luang Pu Chiwakomaphat, the master of traditional medicine.

**Wat Mai Amatarod**

This temple was built in the late reign of King Taksin the Great. It is renowned for its auspicious objects of Phra Somdet in which Somdet Phra Phutthachan (To Phromrangsi) of Wat Rakhang, Thon Buri conducted the foundation ceremony and recited incantations. It has 84,000 small images enshrined in the large chedi behind the ordination hall. Later, smugglers excavated the base of the chedi to steal the images. Thus, the temple had to open the chedi to allow the local people to pay homage to Phra Somdet. In 1966, 4 million Baht was raised from making merit in which the temple constructed a new ordination hall as well as restored the original chedi and also cast an image like Somdet To. In the same year, a Sema and burial stone ceremony was held.

07

**Chao Pho Nu Shrine**

This shrine is at the foot of the Norarattana Sathan Bridge, Bang Lamphu. It has been a centre of faith of the Bang Lamphu community for nearly a century. It is a shrine that is more special than other shrines, as it enshrines a small Buddha image in the attitude of subduing Mara that floated down Khlong Bang Lamphu to this place and did not want to float away. The local people united together to install it and pay homage. In 1960, there was a fire in the area of the Nawarat Market opposite this

shrine. The local people saw a small boy wearing pink waving a flag that put out the fire, and it was believed that the small boy was a god. The local people thus named the Buddha image as "Chao Pho Nu".

08

09

**Wat Tri Thotsathep Worawihan**

There is no evidence as to when this royal temple was constructed, but it is assumed to have been before 1862. The items of importance in this temple is the ordination hall that has Phra Phuttha Nawarakbophit as the principal image. There are also murals on the wall of the ordination hall about the Buddha's life. Besides this, there is the chapel, cloisters, and Phrathat Chedi that is a large spherical shape surrounded by 4 small chedis. It is located behind the ordination hall and is decorated with gold mosaic. Inside is enshrined the Buddha's relics.

10

**Khao San Road**

Is located in Bang Lamphu. Not matter what time it is, the road is always bustling, in particular during the Songkran Festival. Khao San Road is popular with tourists from all over the world, who come to splash water on each other at Songkran. Even when

there are no festivals, it will have numerous tourists mingling together because it is an area for shopping and international food. What cannot be missed is the popular Thai food like Phat Thai. Besides this, there is accommodation, international phone call services, currency exchanges, Internet, bars where people hangout with friends, etc. So, there is everything for travelling, eating, shopping, and sleeping. Come here, have fun and enjoy the comfort that you will never forget.

